

POLYCHROMOS ARTISTS' COLOUR PENCILS



Polychromos artists' colour pencils are valued for their peerless quality by professional artists around the world. Their high standard ensures that Polychromos artists' colour pencils are ideal for use in the graphic arts, for free artistic expression, and for the precise colouring of plans. Faber-Castell's quality standards are applied consistently throughout the manufacturing process. Top-quality materials, combined with our long experience, ensure that Polychromos artists' colour pencils have extremely break-resistant leads, maximum light-fastness, the most vivid colours and optimal paintability, along with many other advantages valued by professional artists.

POLYCHROMOS ARTISTS' COLOUR PENCILS



120 vivid colours, available individually from good specialist shops.
Lead diameter: 3.8 mm
Round cross-section, varnished in the same colour as the lead.
Art. No. 11 0. . .

Set of 12 pencils in a metal tin
A selection of basic colours, available only with *** light-fastness.
Art. No. 11 00 12

Set of 24 pencils in a metal tin
Enlarged colour spectrum, primarily available with *** light-fastness.
Art. No. 11 00 24

Set of 36 pencils in a metal tin or studio box
Assortment featuring the basic colours and carefully graded shades.
Art. No. 11 00 36
Art. No. 11 00 38

Set of 60 pencils in a metal tin
Assortment of colours with extensive shades for landscapes, portraits, design, etc., presented in two tiers.
Art. No. 11 00 60

Set of 120 pencils in a metal tin
Complete range of Polychromos artists' colour pencils, presented in three tiers.
Art. No. 11 00 11

Set of 120 pencils in a wooden case
Wooden case with wenge stain, varnished on the inside and outside and with a high-quality finish, containing 120 Polychromos artists' colour pencils presented in two tiers.
Art. No. 11 00 10

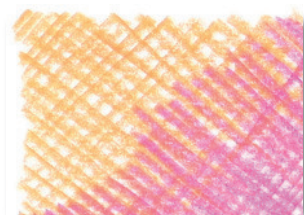




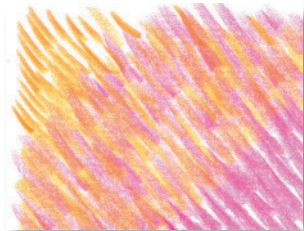
(A)



(B)



(C)



(D)



(E)

POLYCHROMOS ARTISTS' COLOUR PENCILS

Polychromos artists' colour pencils have especially soft leads, which are non-smudge and waterproof. They are characterised by their unparalleled light-fastness and break-resistance.

Examples of use:

(A) Blocks of rich colour

To create blocks of intense colour, hold the pencil in an almost vertical position and press down hard on the paper.

(B) Shading

To colour an area evenly, hold the pencil at a very shallow angle, and only press down lightly on the paper. The structure of the paper will be visible, while individual strokes will not.

(C) Hatching and cross-hatching

Drawing many lines alongside each other will create an area of colour, which can be intensified by repeatedly overlaying lines at different angles.

(D) From light to dark

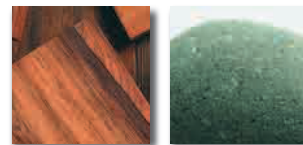
Light colours are transparent, while dark colours provide coverage. Superimposing layers of colour increases the brilliance and vividness of the colours.

(E) Brush painting

To create even areas of colour, paint over the strokes made with Polychromos artists' colour pencils using a bristle brush and paraffin oil (baby oil or salad oil). Oil paints also dissolve the artists' colour pencils, which is why they are often used to draw preparatory sketches for oil paintings. The lines subsequently dissolve when they are painted over.



(F)



(F) Painting onto coloured backgrounds

A coloured background can result in very attractive changes to the character of a colour.

(G) Working on different surfaces

Polychromos colour pencils adhere to many rough surfaces, such as paper, cardboard, wood, stone, leather and metal.

Fixing

Polychromos artists' colour pencils are permanent, adhere firmly to their background, and do *not* require fixing. Fixing could cause lower layers of colour to bleed through to the surface.

ALBRECHT DÜRER ARTISTS' WATERCOLOUR PENCILS

Albrecht Dürer artists' watercolour pencils provide artists with great versatility of expression when draw-



ing, shading and painting in watercolours. High-quality materials, combined with Faber-Castell's experience, have resulted in pencils that produce unsurpassed watercolour effects. The coloured surface can be transformed with only a few fine or broad brushstrokes to reveal the full and unique power of the colours. Depending on the paper being used, the pigments can be completely dissolved, and will then behave in the same way as classic watercolour paints. The paint becomes permanent when dry, enabling other layers of colour to be superimposed without causing it to dissolve again. For this reason, many watercolour artists choose to use the pencils for the fine details in their watercolour paintings, as well as for watercolour sketches while travelling.

ALBRECHT DÜRER ARTISTS' WATERCOLOUR PENCILS

120 vivid colours available individually from good specialist shops. Lead diameter: 3.8 mm
Hexagonal cross-section, varnished in the same colour as the lead.
Art. No. 11 7...

Set of 12 pencils in a metal tin

A selection of basic colours, primarily available with *** light-fastness.
Art. No. 11 75 12

Set of 24 pencils in a metal tin

Enlarged colour spectrum, mainly available with *** light-fastness.
Art. No. 11 75 24

Set of 36 pencils in a metal tin or studio box

Assortment featuring the basic colours and carefully graded shades.
Art. No. 11 75 36 / Item 11 75 38

Set of 60 pencils in a metal tin

Assortment of colours with extensive shades for landscapes, portraits,



design, etc, presented in two tiers.
Art. No. 11 75 60

Set of 120 pencils in a metal tin

Complete range of Albrecht Dürer artists' watercolour pencils, presented in three tiers.
Art. No. 11 75 11

Set of 120 pencils in a wooden case

Wooden case with wenge stain,

varnished on the inside and outside and with a high-quality finish, containing 120 Albrecht Dürer artists' watercolour pencils presented in two tiers.
Art. No. 11 75 10





(A)

ALBRECHT DÜRER ARTISTS' WATERCOLOUR PENCILS

The leads in Albrecht Dürer artists' watercolour pencils can be transformed completely into watercolour paints, and have a high level of light-fastness and break-resistance.

Examples of use:



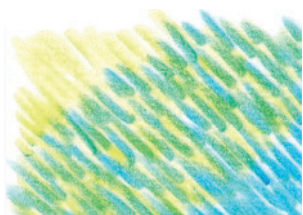
(B)

(A) Blocks of rich colour

To create blocks of intense colour, hold the pencil in an almost vertical position and press down hard on the paper.

(B) Shading

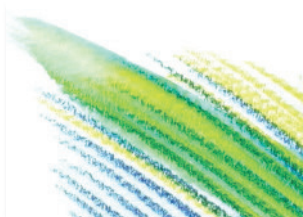
To colour an area evenly, hold the pencil at a very shallow angle, and only press down lightly on the paper. The structure of the paper will be visible, while individual strokes will not.



(C)

(C) From light to dark

Light colours are transparent, while dark colours provide coverage. Superimposing layers of colour increases the brilliance and vividness of the colours.



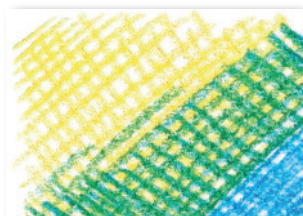
(D)

(D) Running and dissolving with water

Paint over a coloured surface on the paper with a damp brush. The more often the surface is painted over, the more the strokes will dissolve.

(E) Hatching and cross-hatching

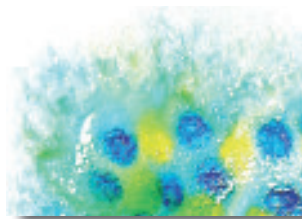
Drawing many lines alongside each other will create an area of colour, which can be intensified by repeatedly overlaying lines at different angles.



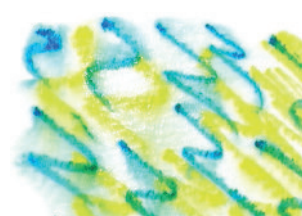
(E)

(F) Dissolving the colour with a spray bottle

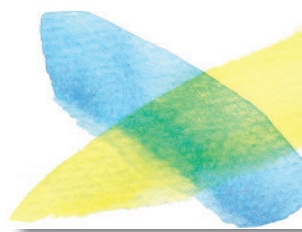
Spraying the coloured surface with water from a spray bottle will make the colours especially intense and cause them to merge into interesting transitions, based on the structure of the paper.



(F)



(G)



(H)

(G) Drawing on wet paper

The artists' watercolour pencils release a great deal of pigment when used on dampened paper. The pencil tips become very soft, and glide smoothly across the paper.

(H) Glazing technique

Areas that have been painted over completely with water will dry permanently into the paper, and can subsequently be painted over again without running.

Fixing

Albrecht Dürer artists' watercolour pencils adhere firmly to the paper and do not require fixing. "UV sprays" will also only enhance their permanence in rare cases.